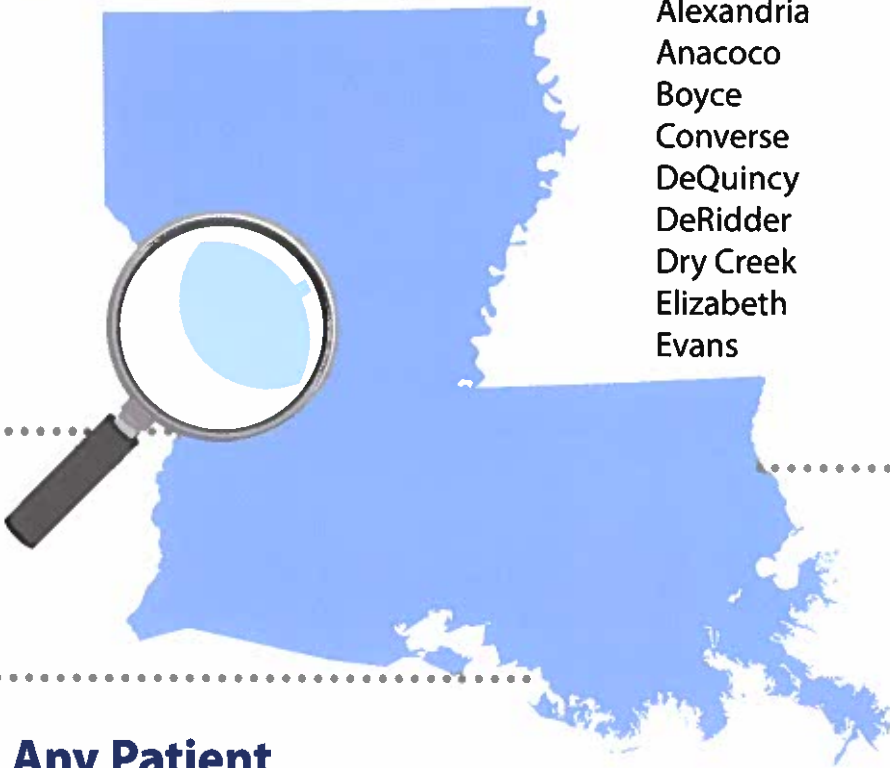


Acute Inpatient Rehabilitation

West and Central Louisiana



Alexandria
 Anacoco
 Boyce
 Converse
 DeQuincy
 DeRidder
 Dry Creek
 Elizabeth
 Evans

Fisher
 Florien
 Fort Polk
 Glenmora
 Hinston
 Hornbeck
 Lake Charles
 Leesville
 Lena
 Many

Merryville
 New Llano
 Noble
 Pitkin
 Pleasant Hill
 Rosepine
 Simpson
 Sulphur
 Toledo Bend
 Zwolle

Who Should Be Referred?

Any Patient

- Requiring an intense inpatient therapy program - defined as the ability to tolerate 3 hours of therapy per day, a minimum of 5 days per week or 15 hours in 7 days.
- Requiring 24 hour rehab nursing and medical supervision by a Rehab Physician.
- Requiring rehabilitation in a hospital setting.
- With the potential to improve function or achieve independence.
- And family willing to participate in the therapeutic rehabilitation program.

Common Diagnosis

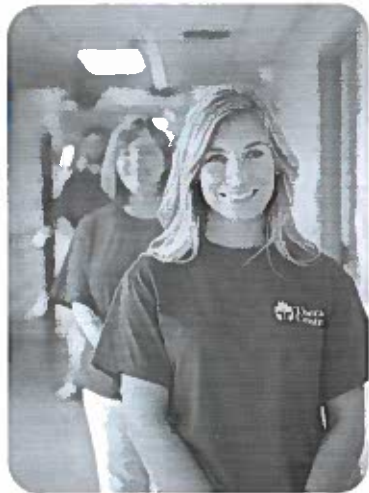
- Stroke (CVA)
- Brain Injury
- Amputation
- Spinal Cord Injury
- Multiple Trauma
- Degenerative Neurological Disorders (*MS, Parkinson's, Guillain Barre, Polyneuropathy, Muscular Dystrophy*)
- Hip Fractures
- Joint Replacements
- Polyarthrititis, including Rheumatoid
- Cardiac Conditions
- Pulmonary Conditions



**For more information or to make a referral, contact us at:
 337.239.5202**

When a referral is made

The following information is needed to complete a patient evaluation.



- Demographics
- History and Physical
- Consults
- Recent Progress Note
- Orders
- PT Notes
- OT Notes
- ST Notes
- Labs/Covid Test
- MAR
- Diagnostic Reports/ Images
- Wound Care Notes
- Dietary Notes
- Respiratory Therapy Notes

You can fax information to 337.239.5550

Upon the completion of the evaluation, it will be reviewed with the Medical Director and you can expect an answer within 2-4 hours.

When the Patient is Accepted & Ready to Transfer



- The Admissions Office will coordinate with the Discharge Planner for the day and time of transfer.
- To Call Report: 337.239.5202
- Copy of the patient's chart should accompany the patient to include the referring physician's discharge summary.
- X-rays copied to a disk.

For more information or to make a referral, contact us at:

337.239.5202

1020 Fertitta Blvd, 3rd Floor
Leesville, LA 71446